

WELCOME

Thank you for coming today.

Today's information event is to show preliminary designs for a small scale development proposed jointly by Williamwood Golf Club and Mactaggart & Mickel.

Representatives from Williamwood Golf Club and Mactaggart & Mickel will be here from 6pm till 8.30pm and will be happy to answer any questions that you may have and to listen to your views or comments.



BACKGROUND



Proposed Investment areas for Williamwood Golf Club

- Multi use Function Areas for community events
- Permanent Indoor Practice Studios
- Improved and expanded Kitchen Facilities
- Junior room with Sports and Media capabilities
- Upstairs Patio Café/ Bar area with balcony
- Gym / Fitness Studios
- Course accessibility improvements
- Course improvements to ensure playability and sustainability for all golfing levels



Planning Matters

The planning application will be assessed against the policies of the East Renfrewshire Council Local Development Plan, which was adopted by the Council in June 2015. The policies allow development, subject to meeting a number of criteria, including:

- There will be no loss of public access
- The proposal involves only a minor part of the outdoor sports facility and would not affect its use and potential for sport and training
- An existing outdoor sports facility is upgraded, which maintains or improves the overall playing capacity in the area

The replacement Local Development Plan, which is currently being prepared, will include policy that will explicitly support limited new development at golf clubs in order to allow for enhancements to the existing sporting facilities.

Approval of planning permission for residential development will also generate financial contributions to support the development of affordable housing and contribute towards improvement to local schools, community facilities and parks



MACTAGGART & MICKEL

Mactaggart & Mickel are an award-winning family business with family values at their heart. We have been designing and constructing quality homes in sought-after locations since 1925. Our current Scottish developments are in Edinburgh & the Lothians, Glasgow, Renfrewshire, Ayrshire and across the Central Belt, and a new development has recently launched in Oxfordshire.



- We strive to deliver quality, reliability and integrity and to create a lasting legacy for future generations.
- Through our business activities we seek to promote initiatives that benefit our people, our customers and the communities in which we work.
- At this event, we are keen to share our proposals with the members, residents and local stakeholders and welcome any feedback.
- We propose to create a high-quality development providing 14 new flats
- The proposals will meet the need for more new quality flats in this part of East Renfrewshire
- Our current developments in East Renfrewshire include Milverton Grange, Lower Whitecraigs, Castle Grove and Stewart Gardens, Malletsheugh, Newton Mearns and starting soon is Broom Grove, in the Broom Estate.





Northbound view
from Stamperland Crescent



Southbound view
from Stamperland Crescent

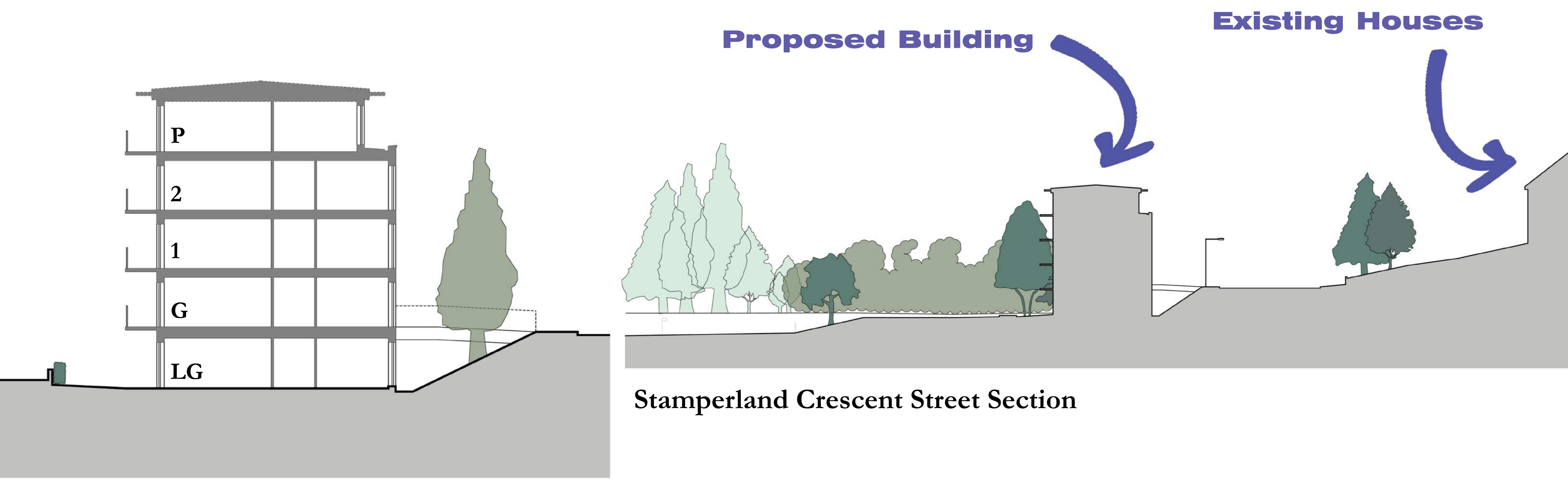


View from 18th Tee on
Williamwood Golf Course





Block Plan as Proposed

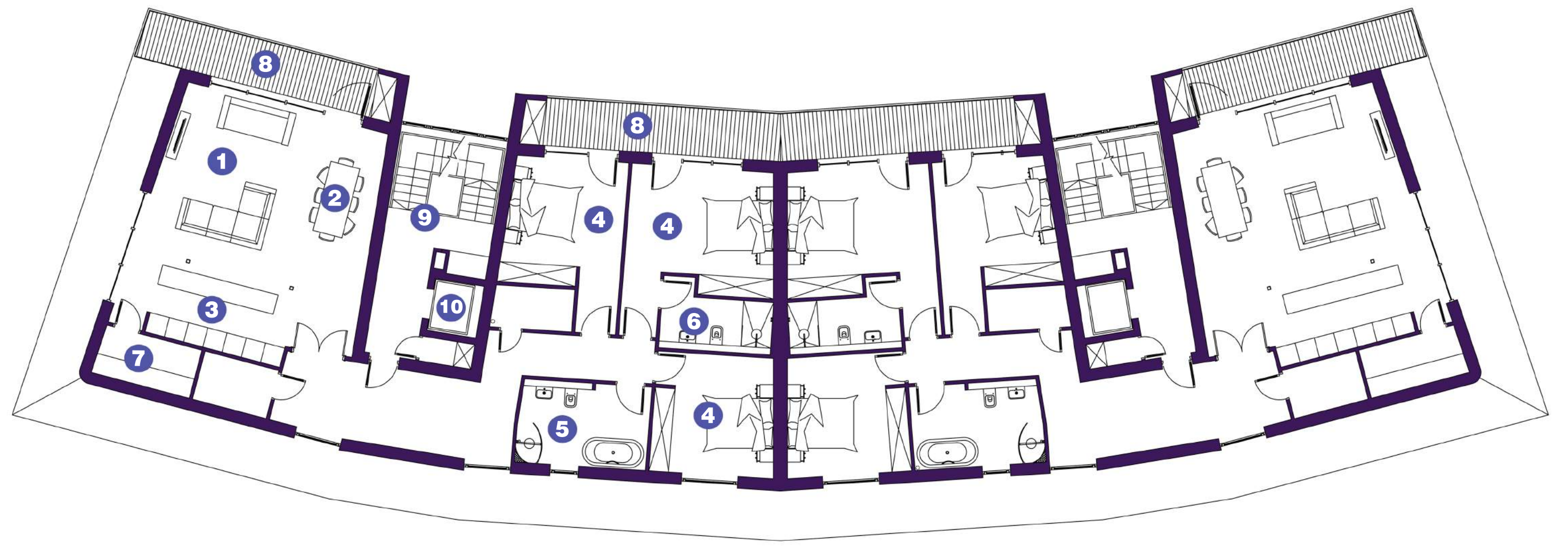


Building Cross Section



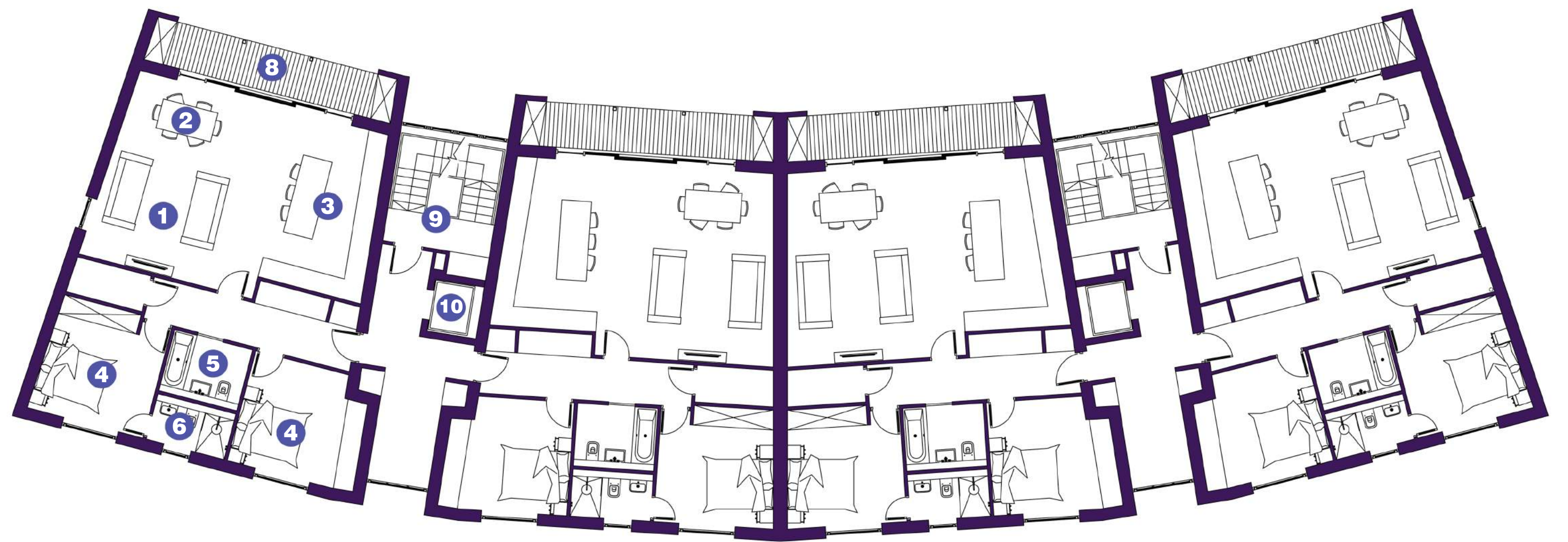
P

PENTHOUSE



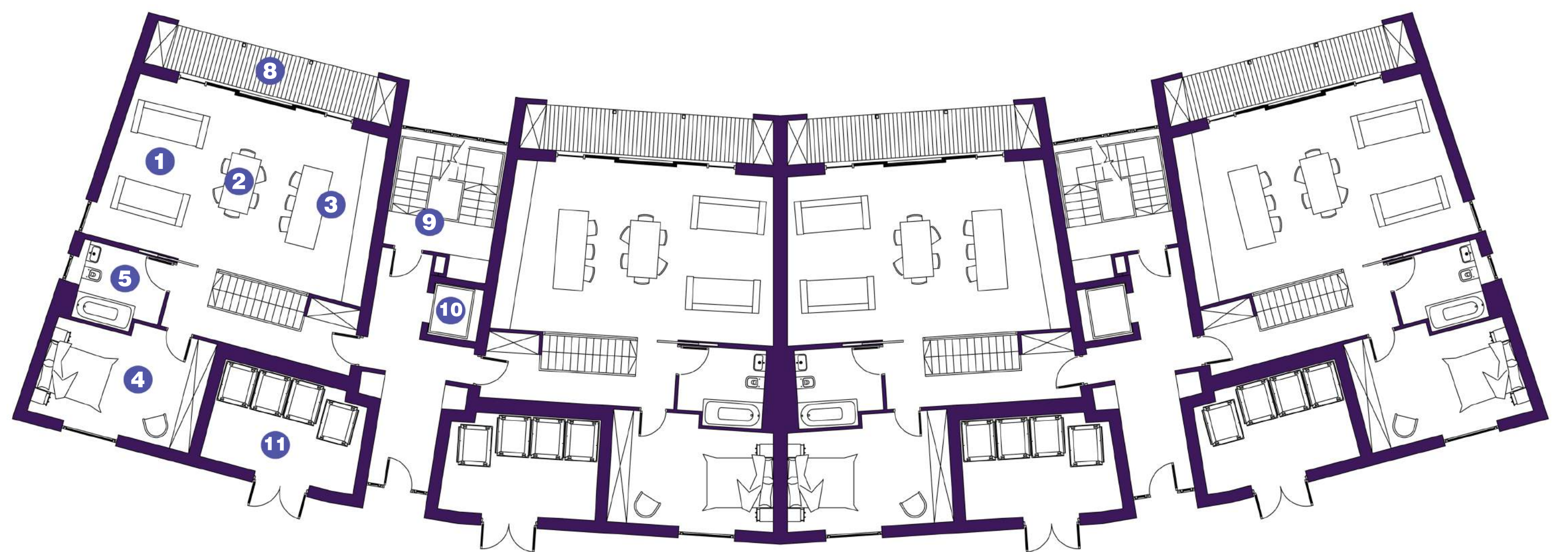
1/2

FIRST FLOOR +
SECOND FLOOR



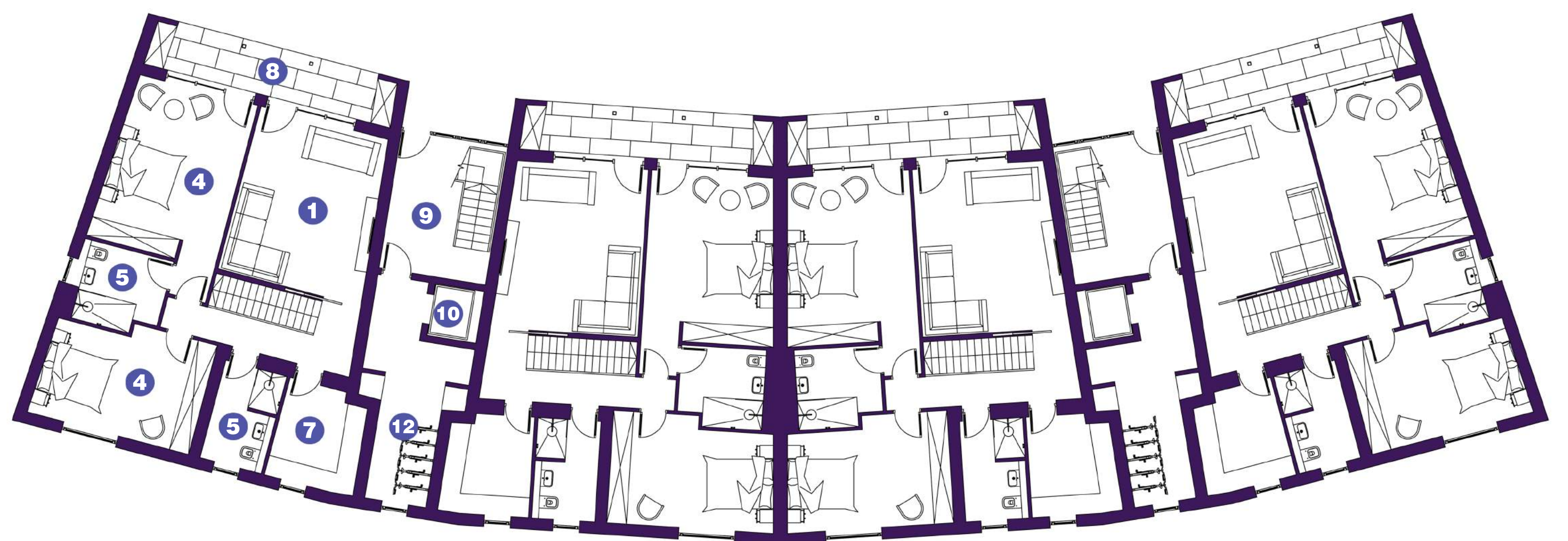
G

GROUND FLOOR



LG

LOWER
GROUND FLOOR



- 1. LIVING
- 2. DINING
- 3. KITCHEN
- 4. BEDROOM
- 5. BATHROOM/SHOWER ROOM
- 6. EN-SUITE
- 7. UTILITY
- 8. BALCONY
- 9. LOBBY STAIRS
- 10. ELEVATOR
- 11. COMMUNAL BINS
- 12. BIKE STORAGE





VIEW FROM STAMPERLAND CRESCENT



VIEW FROM WILLIAMWOOD GOLF COURSE

